

# FreeSpace FS2SE

## surface-mount loudspeaker

### Product Overview

The Bose sound quality you expect. The improvements you need. FreeSpace FS loudspeakers are the next step of our widely trusted line of in-ceiling and surface-mount loudspeakers, offering significant upgrades in durability, design, and ease of installation — all with remarkably consistent tonality. Engineered for high-quality performance in both background music and voice announcement applications, FS loudspeakers are ideal for almost any commercial space. The line includes five loudspeakers, two distinct levels of sound, new mounting options, and a modern aesthetic to match. For those seeking consistent, quality installed sound, FreeSpace FS loudspeakers are the perfect mix of performance and value.



### Key Features

FS2 models feature a 2.25-inch full-range transducer, low frequency down to 83 Hz, 16-ohm and 70/100V operation while FS4 models feature a 4.5-inch full-range transducer, low frequency down to 70 Hz, 8-ohm and 70/100V operation

All speakers offer clear voice reproduction and smooth response for background music, with shared voicing across all FS models

Bring quality sound to more places with the FS2SE, FS4SE, FS4C designed for outdoor wet installation — and the FS2P pendant loudspeaker, perfect for open-ceiling applications.

Create tailored mix-and-match installations using in-ceiling, surface-mount, and pendant-mount options. DesignMax subwoofers and larger models can expand your system design options even further

Blend with more room designs with updated enclosures — available in black and white — that pair modern aesthetics with practical features, including removable logos

Install with ease with Euroblock inputs, front baffle-mounted tap settings and audio connections on in-ceiling models, and a full suite of accessories created to handle a wide range of site-specific challenges.

Support public safety — all models are UL 1480 ULC-S541-listed for use in fire alarm and signaling systems in life safety applications

### Technical Specifications

SINGLE LOUDSPEAKER PERFORMANCE		
Frequency Response (-3 dB) <sup>(1)</sup>	95 - 16,000 Hz	
Frequency Range (-10 dB) <sup>(1)</sup>	83 - 19,000 Hz	
Nominal Coverage Angle (H x V) <sup>(2)</sup>	145° x 140°	
Nominal Coverage (H x V) (1 - 10 kHz)	130° x 130°	
	Bose extended-lifecycle test <sup>(5)</sup>	AES transducer test <sup>(6)</sup>
Power Handling, long-term continuous	16 W	20 W
Power Handling, peak	64 W	80 W
Sensitivity (SPL/1W @ 1 m) <sup>(3)</sup>	85 dB	85 dB
Calculated Maximum SPL @ 1 m <sup>(4)</sup>	97 dB	98 dB
Calculated Maximum SPL @ 1 m, peak	103 dB	104 dB
Loudspeaker EQ	Not Required, Bose EQ Voicing and SmartBass available	
Recommended High-Pass Protection	85 Hz with minimum 24-dB/octave filter	
Transformer taps	70V: 1, 2, 4, 8, 16 W, bypass 100V: 2, 4, 8, 16 W, bypass	
TRANSDUCERS		
Full-Range Driver	1 x 2.25-inch woofer (57 mm)	
Nominal Impedance	16 ohms (transformer bypass)	

# FreeSpace FS2SE

## surface-mount loudspeaker

PHYSICAL	
Enclosure Material	Engineered plastics, highly UV fade resistant
Bracket Material	Powder-coated steel
Grille	Perforated steel, powder-coat finish, tamper-resistant design
Logo	Rotatable, removable
Color	Black: similar to Ral 9005, White: similar to Ral 9003
Environmental/Ingress-Protection	Outdoor IP55 (suitable for use outdoors in wet locations), includes weather resistant input cover.
Safety Agency	Certification: UL 1480, ULC-S541 for Fire Alarm and Signaling Systems Installation: NFPA 70, NFPA 72, CSA C22.1 Section 32, in accordance with IEC60268-5, CE RoHS
Operating Temperature Range	-25 °C to 70 °C (-13 °F to 158 °F)
Connectors	Euroblock 6-pin connector with loop-through, mounted on rear. Accepts 18 AWG (0.8 mm <sup>2</sup> ) to 14 AWG (2.5 mm <sup>2</sup> ) size wire.
Suspension/Mounting	External U-bracket with bracket screws
	7 preset mounting angles: 0°, ± 15°, ± 30°, or ± 45° for wall or ceiling placement
	Two (2) rear M8 screw inserts for use with optional Ceiling Mount Bracket, or DMSBRKT pan & tilt bracket
	Safety cable can be used with either of two (2) rear M8 inserts when using included U-bracket, or with either of two (2) side M8 inserts, when using optional brackets
Dimensions (H x W x D)	182 x 113 x 114 mm (7.1 x 4.4 x 4.5 in)
Dimensions with Bracket (H x W x D)	198 x 113 x 135 mm (7.8 x 4.4 x 5.3 in)
Net Weight, Loudspeaker with grille and bracket (single)	1.63 kg (3.6 lb)
Shipping Weight, Pair	4.17 kg (9.2 lb)
Included Accessories	Each FS2SE includes one (1) Bose logo for vertical orientation, one (1) U-Bracket and one (1) weather resistant input cover
Optional Accessories	Aluminum grille kit, DesignMax DMSBRKT pan & tilt bracket, Ceiling Mount Bracket S2, Ceramic terminal w/ Fuse kit
PRODUCT CODES	
841151-0110	FREESPACE FS2SE PAIR BLK
841151-0210	FREESPACE FS2SE PAIR WHT

#### Footnotes

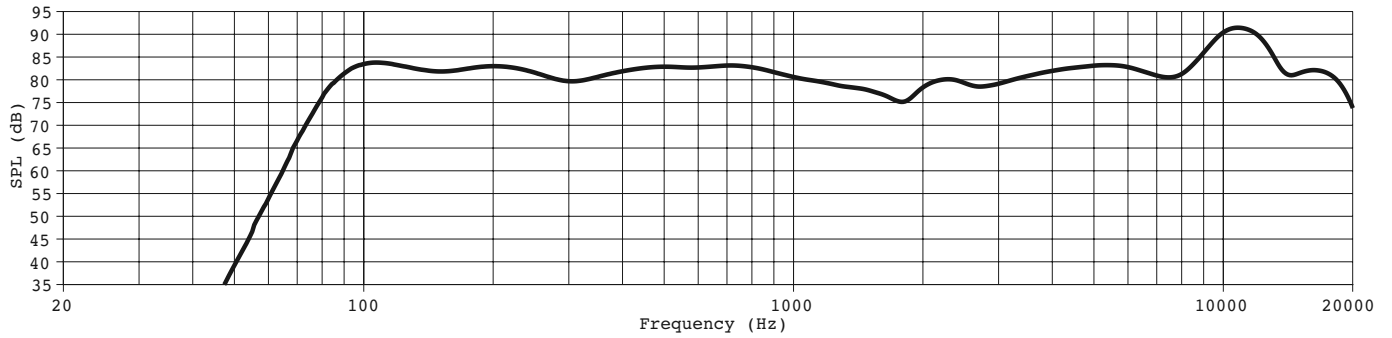
- (1) Frequency response and range measured on-axis in half-space environment with recommended EQ
- (2) 1 kHz to 4 kHz average
- (3) Sensitivity measured on-axis in half-space environment with recommended EQ
- (4) Maximum SPL calculated from sensitivity and power handling specifications, exclusive of power compression
- (5) Bose extended-lifecycle test using pink noise filtered to meet IEC268-5, 6-dB crest factor, 500-hour duration
- (6) AES standard 2-hour duration with IEC system noise

For additional specifications and application information, please visit [PRO.BOSE.COM](http://PRO.BOSE.COM).  
Specifications subject to change without notice. 03/2020

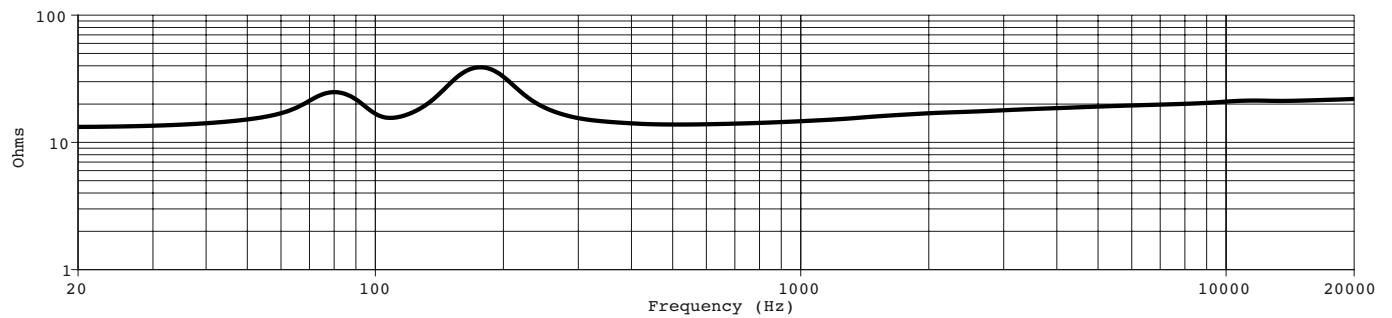
# FreeSpace FS2SE

surface-mount loudspeaker

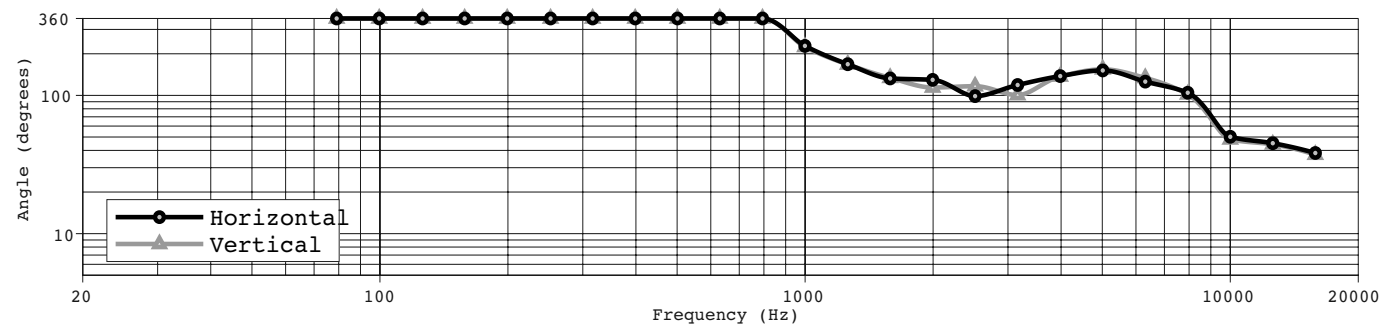
## On-Axis Frequency Response (half-space ( $2\pi$ ) with Bose EQ voicing)



## Impedance



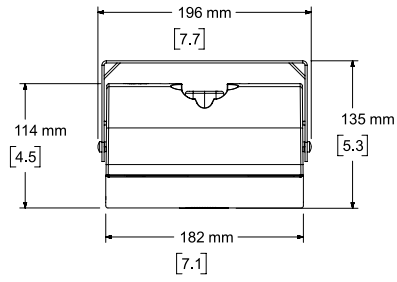
## Beamwidth



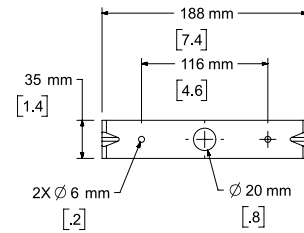
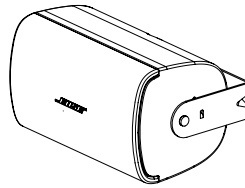
# FreeSpace FS2SE

## surface-mount loudspeaker

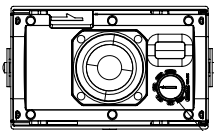
### Dimensions



**Top View**

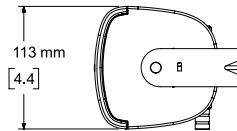


**Rear View  
BRACKET ONLY**

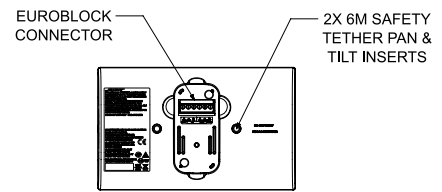


TAP SWITCH

**Front View  
GRILLE REMOVED FOR CLARITY**



**Right View  
DIMENSIONS APPLY TO BOTH SIDES**



**Rear View  
BRACKET/CAP REMOVED FOR CLARITY**

- NOTES:
1. DIMENSIONS ARE IN MILLIMETERS OVER INCHES
  2. WEIGHT APPROX 1.43kg [3.15lbs] (SPEAKER ONLY)  
WEIGHT W/BRACKET APPROX 1.63kg [3.60lbs]

For additional specifications and application information, please visit [PRO.BOSE.COM](http://PRO.BOSE.COM).  
Specifications subject to change without notice. 03/2020